



LE DOMAINE  
DES VANNEAUX  
• HÔTEL GOLF & SPA •



# At Presles

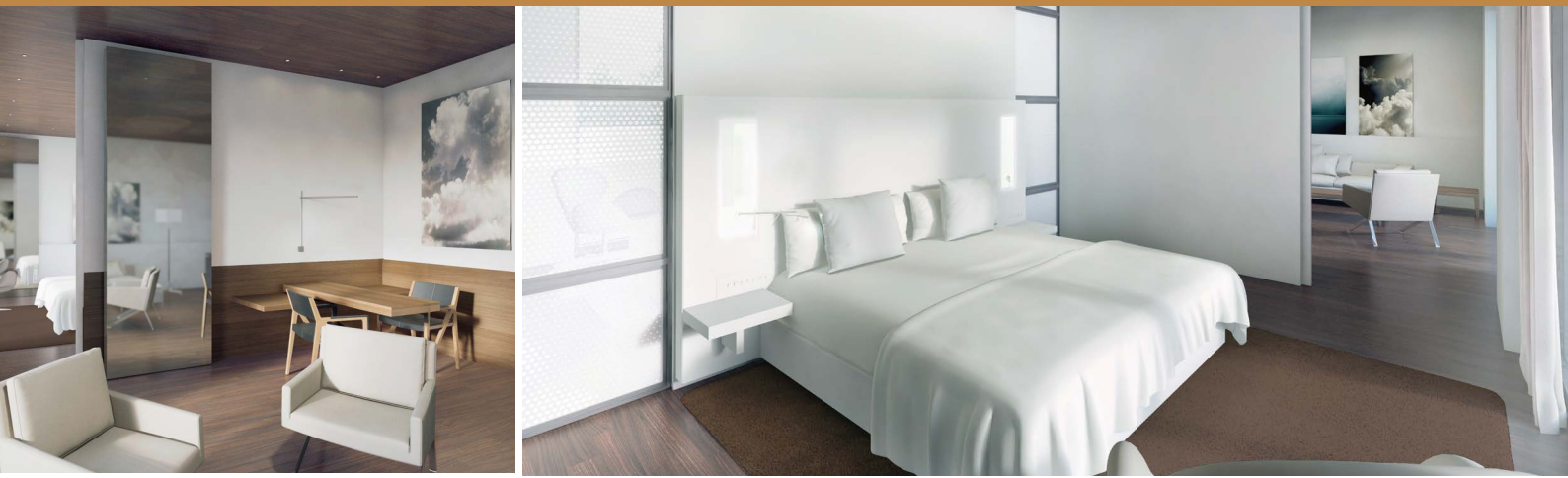
Live in harmony with nature and architecture,  
at the heart of the Oise valley.

David Moreau, Hotel Manager,  
bids you welcome.



**LE DOMAINE DES VANNEAUX**  
**HÔTEL GOLF & SPA**  
1 ROUTE DU GOLF DES VANNEAUX  
95590 PRESLES, FRANCE  
TEL. +33 (0)6 03 26 23 49  
E-MAIL [hb4d0@accor.com](mailto:hb4d0@accor.com)

**sofitel.com**



## AN INVITATION TO SERENITY

A verdant sanctuary, Le Domaine des Vanneaux is nestled in the heart of a valley that takes pride in preserving its heritage. The many natural sites in the area teem with biodiversity. It's an astonishing breath of fresh air just outside of Paris. The Golf de L'Isle-Adam course surrounds the hotel with greenery, further imbuing it with peace and tranquility.

## WHERE NATURE MEETS ARCHITECTURE

Elegant in its simplicity, the hotel's design was inspired by the essence and aesthetics of traditional French farmhouses. The streamlined interpretation of its rustic architecture floods the interiors with light and landscapes in the spirit of a country cottage. Quality materials – wood cladding, stone, zinc, walnut – combine refinement and tradition in a strong yet muted color palette. Each cozy and convivial guest room features oversized windows and balconies that look out onto nature.

## A VERDANT SANCTUARY

Situated amidst mature trees, the hotel is in harmony with its setting. The L'Isle-Adam golf course, created by architect Ronald Fream, offers 18 holes over 6,188 meters (6,767 yards). With hills, valleys, woodlands and magnificent panoramic views of the region, it is an invitation to unwind. At Le Domaine des Vanneaux, you feel an unimaginable sense of freedom and renewal... for memorable moments in total serenity.

### SEMINARS, RECEPTIONS & EVENTS

Le Domaine des Vanneaux offers 320sqm (3,445 sq ft) of rooms for your meetings and seminars. Elevate your events with these light-filled, welcoming spaces, including terraces with sublime vistas.

### POOL

Enjoy relaxing, peaceful moments in the heated outdoor pool with views of the golf course.

### LE RESTAURANT DES VANNEAUX

Head chef Pierre Meneau has designed a menu that blends creativity with a variety of French culinary traditions. Dine in an exceptional space with a wood-burning fireplace and views of the L'Isle-Adam golf course.

### SPA

Dedicated to beauty and wellness, Cinq Mondes Spa offers three treatment and massage rooms, a sauna and a hammam. The jacuzzi, which can be privatized, features a fireplace – offering an extraordinarily relaxing sensory experience.



Feel the calm and gentleness of this verdant land so beloved by the local lapwings, or *vanneaux*. You are at peace in this naturally preserved environment, where serenity reigns supreme.



In the heart of the Oise valley and surrounded by the national forests of L'Isle-Adam, Carnelle and Montmorency, Le Domaine des Vanneaux provides a sumptuous setting for a revitalizing break amidst nature, yet so close to Paris.

### THE HOTEL ★★★★★

67 rooms and suites, a gourmet restaurant and bar, heated outdoor pool, Cinq Mondes Spa, 5 meeting rooms

### SERVICES.

Room service, housekeeping, laundry service, porter, Wi-Fi, access for people with reduced mobility, printers/copiers, bike rental, pets allowed

### GETTING HERE.

**By car:** 10 minutes from L'Isle-Adam, 20 minutes from Auvers-sur-Oise, 30 minutes from Chantilly, 35 minutes from Paris (Gare du Nord)

**Airport:** 25-minute drive from Paris-Charles de Gaulle

